



# Designer Showcase

Pattern Name	Fabric Content	Ends / Picks	Weight per lin yd	Roll Size / Width	Flammability Tests <sup>1</sup>	Cleaning Code
<b>Alliance</b>	42% Polyester 38% Post Industrial Recycled Polyester 20% Post Consumer Recycled Polyester	145 / 48	10.4 oz.	50 yds. 66" wide	ASTM E-84 Cal. TB 117-2013 NFPA 260 / UFAC	W
<b>Coalition</b>	41% Polyester 38% Post Industrial Recycled Polyester 21% Post Consumer Recycled Polyester	145 / 47	10.7 oz.	50 yds. 66" wide	ASTM E-84 Cal. TB 117-2013 NFPA 260 / UFAC	W
<b>Collaborate</b>	42% Polyester 38% Post Industrial Recycled Polyester 20% Post Consumer Recycled Polyester	145 / 49	7.8 oz.	50 yds. 66" wide	ASTM E-84 Cal. TB 117-2013 NFPA 260 / UFAC	W
<b>Collective</b>	56% Post Industrial Recycled Polyester 44% Post Consumer Recycled Polyester	145 / 45	10.6 oz.	50 yds. 66" wide	ASTM E-84 Cal. TB 117-2013 NFPA 260 / UFAC	W
<b>Unison</b>	50% Post Industrial Recycled Polyester 27% Post Consumer Recycled Polyester 23% Polyester	145 / 47	10.8 oz.	50 yds. 66" wide	ASTM E-84 Cal. TB 117-2013 NFPA 260 / UFAC	W

#### Additional Information

All patterns in this collection **meet or exceed** ACT<sup>®</sup> Performance Guidelines.



<sup>\*</sup>ACT<sup>®</sup> Registered Certification Marks

Dye lots may vary from samples shown.  
Final determination of the suitability of this product for an application rests with the user.

<sup>1</sup>Flammability: This term and any corresponding data refer to the typical performance in the specific tests indicated and should not be construed to imply the behavior of this or any other material under actual fire conditions.

Proposition 65 Warning: This product may contain chemicals known to the State of California to cause cancer, birth defects and other reproductive harm.

#### UL Recognized Component

All patterns in this collection can be applied without need for further testing to any office panel system which has been authorized for use with fabrics included in UL's Fabric Recognition Program.

#### Earth Friendly

All patterns in this collection are part of the Earth Friendly Collection. Burch's Earth Friendly Collection provides fabric options for reducing a negative impact on the environment.

#### Directional Fabric

All patterns in this collection are directional fabrics. Please use caution when cutting and applying.

## Designer Showcase



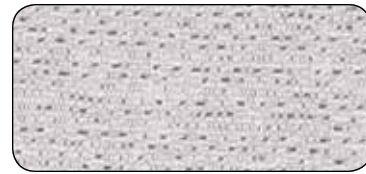
1.800.817.1187 [conklinoffice.com](http://conklinoffice.com)



## Alliance



7216 Mica



7221 Stardust



7218 Champagne



7220 Sterling



7219 Alloy



7217 Taupe

## Collective



7930 Jute



7929 Driftwood



7931 Sand Dollar

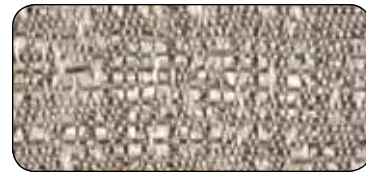
## Unison



7313 Suede



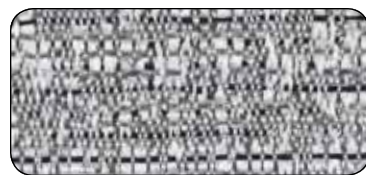
7317 Ecrú



7318 Putty



7316 Halo



7315 Haze

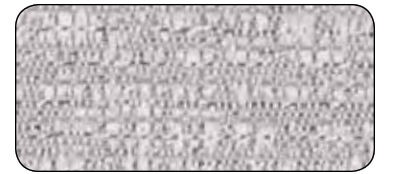


7314 Flint

## Coalition



7132 Soft Bronze



7128 Iced



7133 Shimmer



7129 Tinsel



7131 Heirloom



7130 Pewter

## Collective



7926 Pearl



7927 Aluminum

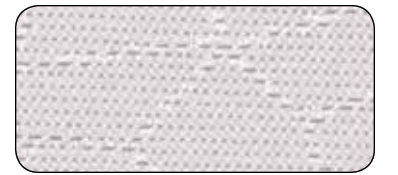


7928 Storm

## Collaborate



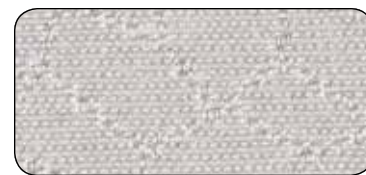
7059 Linen



7056 Oyster



7057 Latte



7055 Moon Rock



7054 Slate



7058 Fawn